





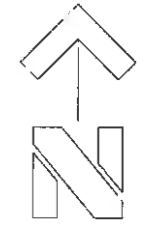


- KEY:**
-  Existing Trees and Shrubs
  -  Arable Pasture/Fields
  -  Calcareous Grassland
  -  Natural Regeneration of Quarry
  -  Byway/Bridleway/Footpath route
  -  Site Boundary



**REVISIONS:**  
**A:** Removed incorrect label. NN Oct 2015. Based on Greenhatch Group's topographical survey '16960\_OGL rev 1' and Oasis Architecture's site plan 'CL208312.105 rev B'  
**B:** Revised footpath route and key reflecting comments received from SF 04.11.15- JC 06.11.15  
**C:** Proposed re-grading updated to show James Associates drawing 'JA-175-001-005.1' received 09.11.15.  
**D:** Proposed re-grading updated to show James Associates drawing 'JA-175-001-005.1' received 20.11.15.

**Weddle Landscape Design**  
 LANDSCAPE ARCHITECTURE  
 ENVIRONMENTAL PLANNING  
 News Studio, Charnwood House, Tel (0114) 250 1181  
 8 Kenwood Bank, Sheffield S7 1NL Fax (0114) 250 1188  
 www.weddles.co.uk email weddles.co.uk

No. BACKDALE QUARRY

Title LANDSCAPE RESTORATION  
 PHASE 1

scale	drawn	date	job number	number	revision
1:500	NN	OCT 15	501	BDQ05	0

